



3/6/2001

Suggested User/Custodian Work Flow for Online Production - Maintenance Mode

Step 1: Create Content

Department Personnel

Timeframe:
Varies since it is determined by writing and computer abilities.

Step 2: Transmission to Custodian

Timeframe:
Seconds

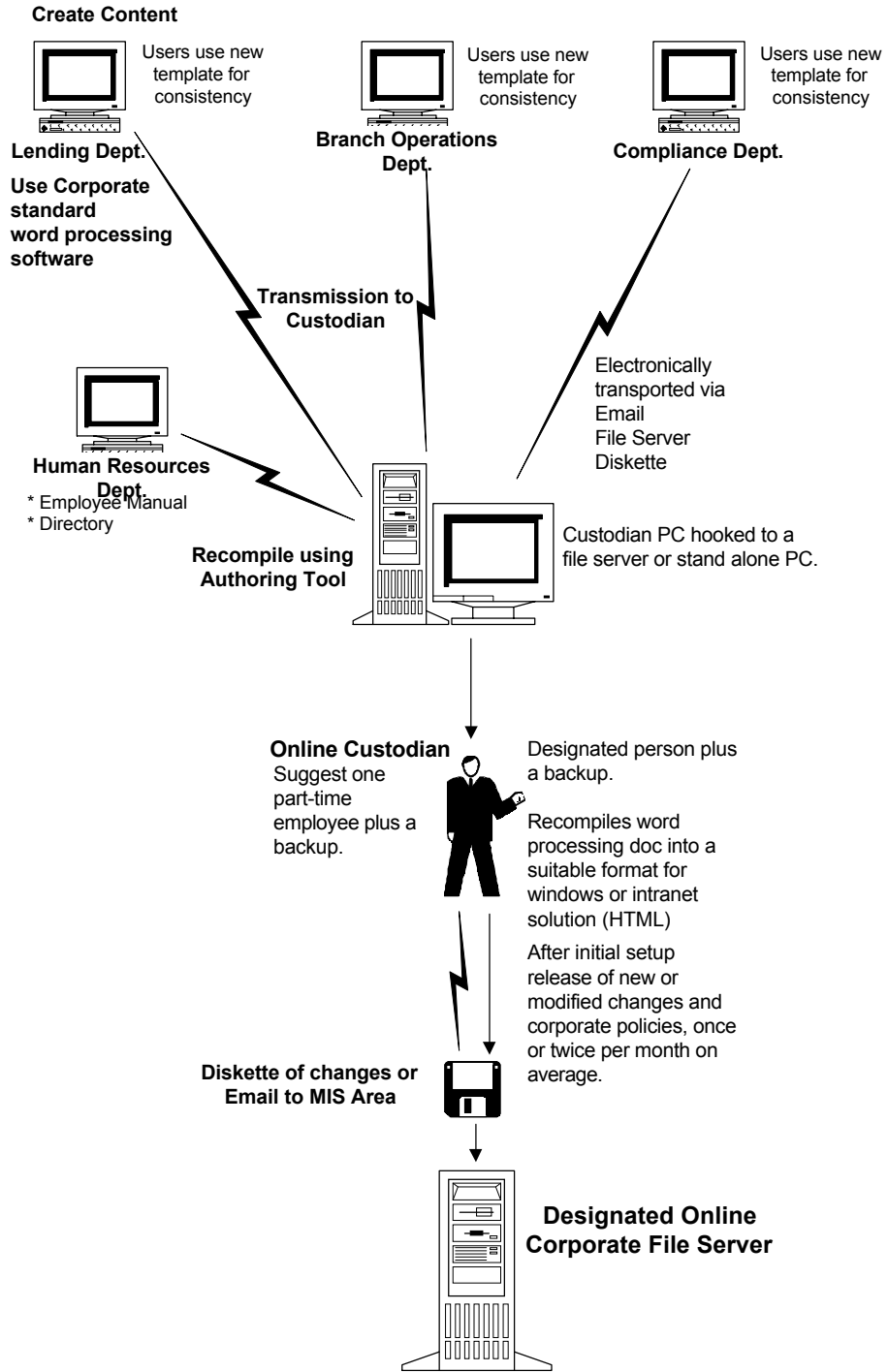
Step 3: Recompile using Authoring Tool

Standard production time:
10 - 15 pages per hour for recompiling.

Step 4: Changes to MIS Area

Standard production time:
5 minutes when changes are required.
1 - 1 1/2 hours for initial setup.

Typical that total online documents is between 5 - 15 mg.



4444 Auckland Avenue • Toluca Lake, California 91602

Phone: (818) 985-1976 • Fax: (818) 985-3910

EMail: corpknow@relaypoint.net



3/6/2001

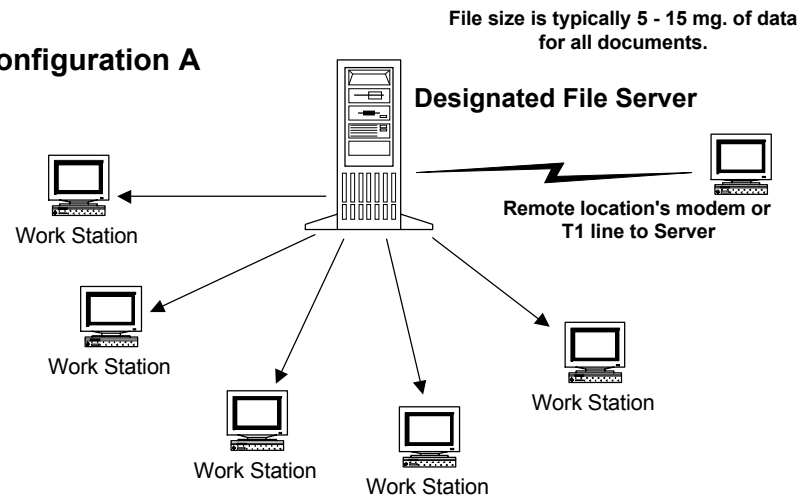
Suggested Client Work Flow for Online Production - Maintenance (Cont.)

Step 5

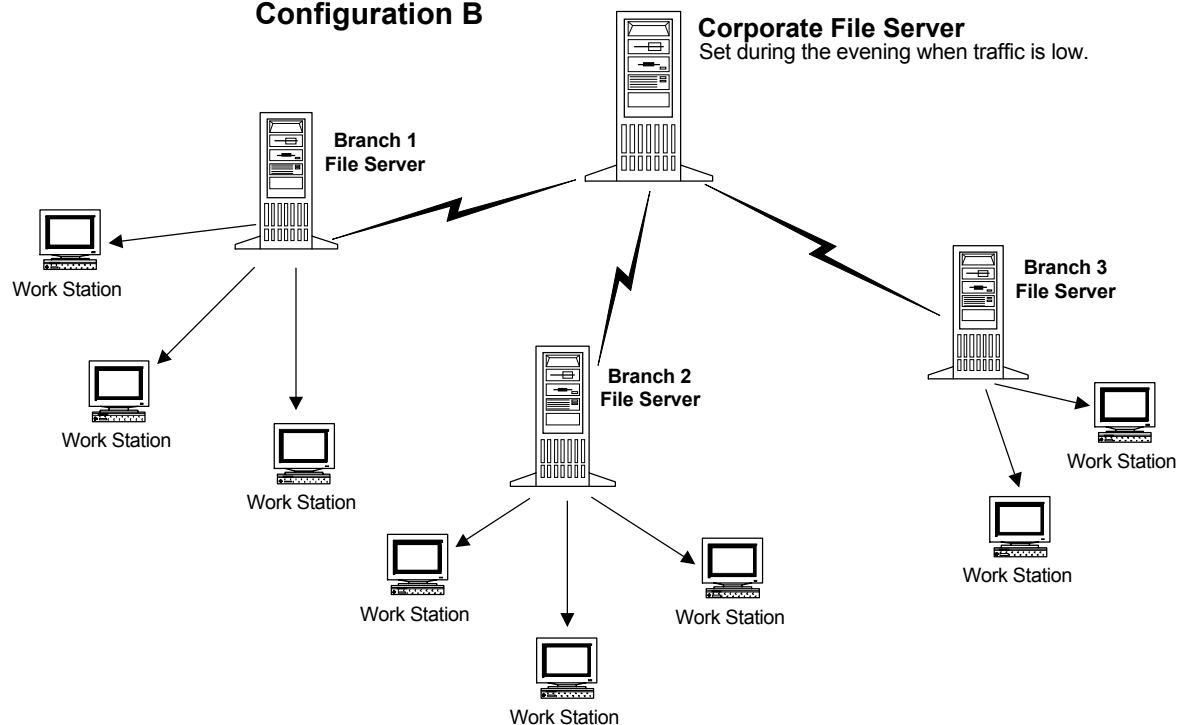
Transmission of knowledge to user.

Transmission of subset is initially approximately 2K and then however big the topic 1K - 20K.

Configuration A



Configuration B



4444 Auckland Avenue • Toluca Lake, California 91602

Phone: (818) 985-1976 • Fax: (818) 985-3910

EMail: corpknow@relaypoint.net