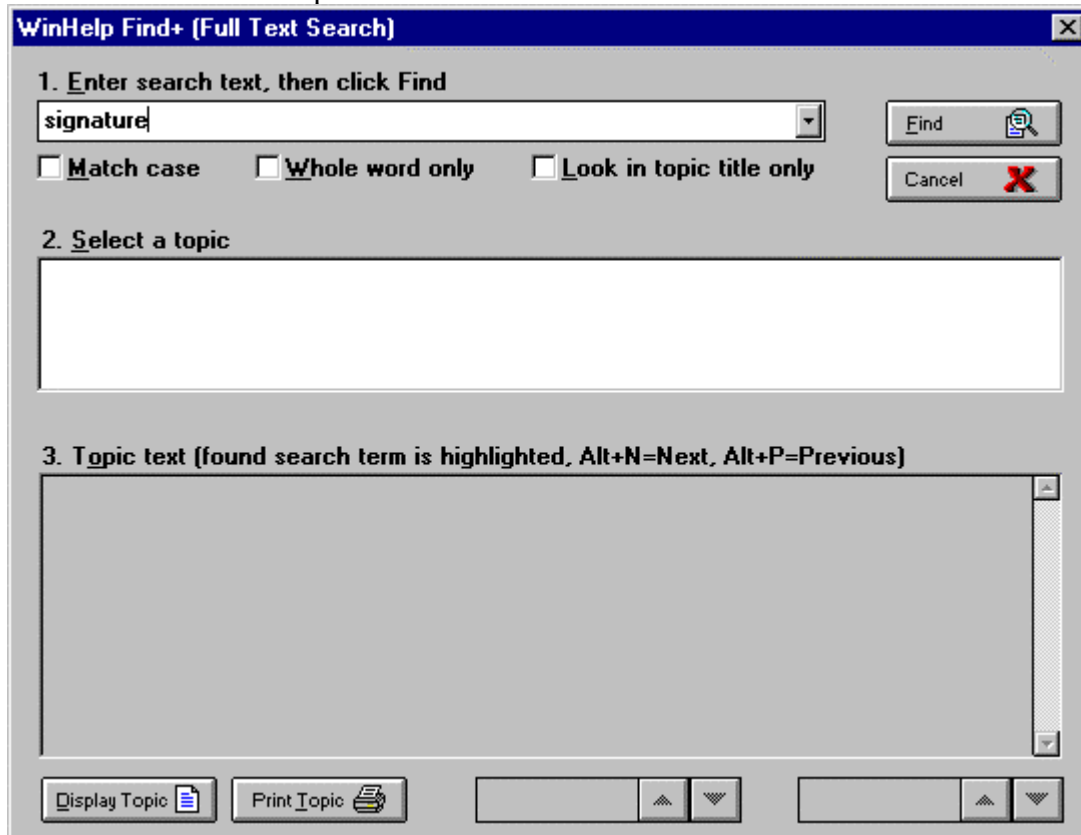


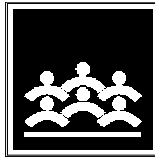


## Examples of Online Full-Text Search

3/6/2001

Standard Win 3.1 Help





**WinHelp Find+ (Full Text Search)**

1. Enter search text, then click Find

signature

Match case     Whole word only     Look in topic title only

Find    Cancel

2. Select a topic

- Federal Reserve Bank Signature Cards (19 + title)
- Endorsement Of United States Treasury Checks (3)
- Types of Checks (2)
- Central Operations (1)

3. Topic text (found search term is highlighted, Alt+N=Next, Alt+P=Previous)

Federal Reserve Bank **Signature** Cards

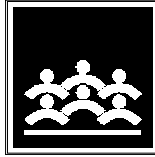
Central Operations -- Customer Service

11/9/96

Summary

This section defines Federal Reserve Bank (FRB) signature card responsibilities and provides Branch completion/distribution procedures.

Display Topic    Print Topic    Topic 1 of 5    Term 1 of 19



**Designers Bank Online Manuals**

File Edit Bookmark Options Help

Contents Search Back Print << >> Glossary Main Menu Find+

## Federal Reserve Bank Signature Cards

Central Operations -- Customer Service

11/9/96

---

### Summary

This section defines Federal Reserve Bank (FRB) signature card responsibilities and provides Branch completion/distribution procedures.

---

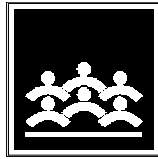
### Definition

Branch cash orders are centralized in the [Wire Transfer](#) Department and transmitted between the Bank and FRB via electronic communications. Occasionally, due to system malfunctions, cash orders must be placed manually and require authorized signatures on the request forms. Overages and shortages to incoming/outgoing cash shipments and food coupon shipments also require authorized signatures on FRB adjustment entries. The Los Angeles Branch of the Federal Reserve Bank (FRB) of San Francisco require the completion of two different signature cards to facilitate the processing of manual cash orders and adjustments to cash and food coupon shipments.

---

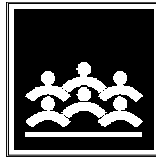
### Policy

The Wire Transfer Department is responsible for filing new and/or updated centralized cash order signature cards with FRB. The card should contain the signatures of the



MS HTMLHelp (compiled)

The screenshot shows a web browser window titled "Designers Bank Online Manuals". The browser's address bar contains "BSA". The browser's navigation toolbar includes buttons for Hide, Locate, Back, Forward, Stop, Refresh, Home, Print, and Options. The browser's content area displays the "Main Table of Contents" for Designers Bank. The page features a search box with the keyword "signature" and a "List Topics" button. Below the search box is a list of topics to display, including "Central Operations", "Employees Serving as Notaries Public", "Endorsement Of United States Treasur", "Federal Reserve Bank Signature Card", and "Types of Checks". The "Display" button is located below the list. The main content area includes a "Quick Reference Guide" link, a "Designers Bank Board" link, and a "Branch/Director" link. The page also features a "January 15, 2000 -- What's New" link.



**Designers Bank Online Manuals**

Hide Locate Back Forward Stop Refresh Home Print Options

Contents Index Search Favorites

Previous Next

Bank Secrecy ... Bank Secrecy ... Foreign Currency...

Type in the keyword to find:  
signature

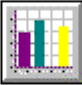
List Topics

Select topic to display:

- Central Operations
- Employees Serving as Notaries Public
- Endorsement Of United States Treasury
- Federal Reserve Bank Signature Cards**
- Types of Checks

Display

BSA



## Federal Reserve Bank Signature Cards

Central Operations -- Customer Service

11/9/96

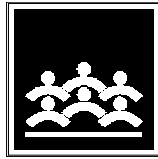
---

### Summary

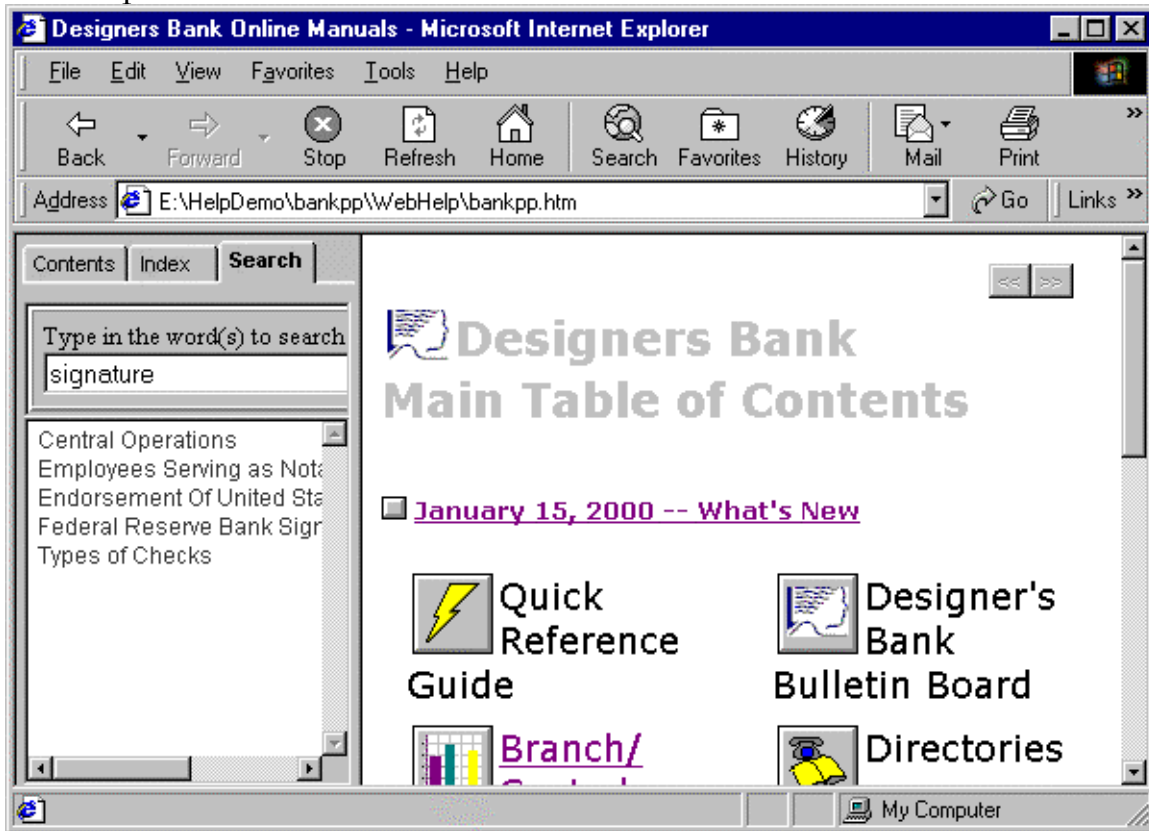
This section defines Federal Reserve Bank (FRB) signature card responsibilities and provides Branch completion/distribution procedures.

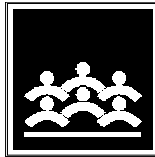
---

### Definition



### WebHelp 3





Designers Bank Online Manuals - Microsoft Internet Explorer

File Edit View Favorites Tools Help

Back Forward Stop Refresh Home Search Favorites History Mail Print

Address E:\HelpDemo\bankpp\WebHelp\bankpp.htm Go Links

Contents Index **Search**

Type in the word(s) to search  
signature

Central Operations  
Employees Serving as Not  
Endorsement Of United Sta  
**Federal Reserve Bank Sigr**  
Types of Checks

**Federal Reserve Bank  
Signature Cards**  
Central Operations -- Customer Service  
11/9/96

---

**Summary**  
This section defines Federal Reserve Bank (FRB) signature card responsibilities and provides Branch completion/distribution procedures.

---

**Definition**  
Branch cash orders are centralized in the [Wire Transfer](#) Department and transmitted between the Bank and FRB.

Done My Computer